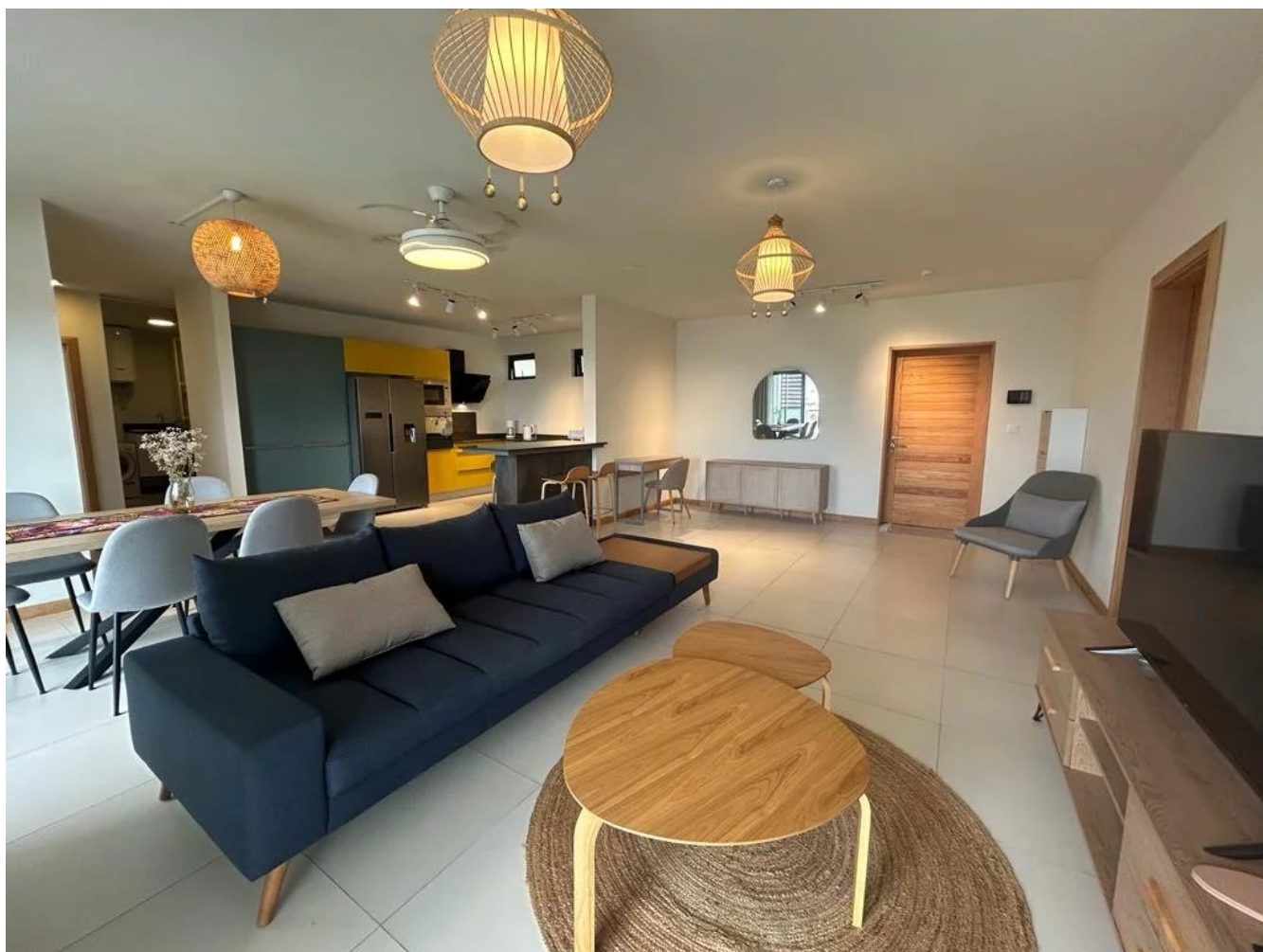




SODNAC - Modern apartment - 3 bedrooms



RENT : 1,276 €

EMAIL : MAURITIUS@BARNES-INTERNATIONAL.COM

B45 Royal Road
Grand Baie 30501



PHONE : +230 460 8213
mauritius@barnes-international.com

Ruisseau Créole, BG 09 MU
Rivière Noire, 90625

Les Allées d'Helvétia
Moka, 80840 Maurice

London Way, Coastal Road
Mahebourg , 50815 Maurice

DESCRIPTION

This spacious 142 m² apartment, with its contemporary design, is located in a new building between Sodnac and Phoenix.

It features 3 bedrooms, including a master suite and one with a small balcony, a large laundry room, a fully-equipped open-plan kitchen and a vast living area with lounge and dining room. The balcony offer beautiful a view on the mountains and the sea in the distance.

The apartment is ideally located close to shopping centers, primary and secondary schools, sports facilities, hospitals and the freeway.

FEATURES

Type de bien:	Apartment	Surface:	142.4 m ²	Terrain:	-
Charges:	-	Périodicité des charges:	-	Ascenseur:	Yes
Piscine:	-	Nombre de lots:	-	Taxe foncière:	-
Parking:	-	Compléments de loyer:	-	NB de pièces:	4 rooms
NB de chambres:	3 bedrooms	Honoraire à la charge:	of the owner and the tenant		

B45 Royal Road
Grand Baie 30501

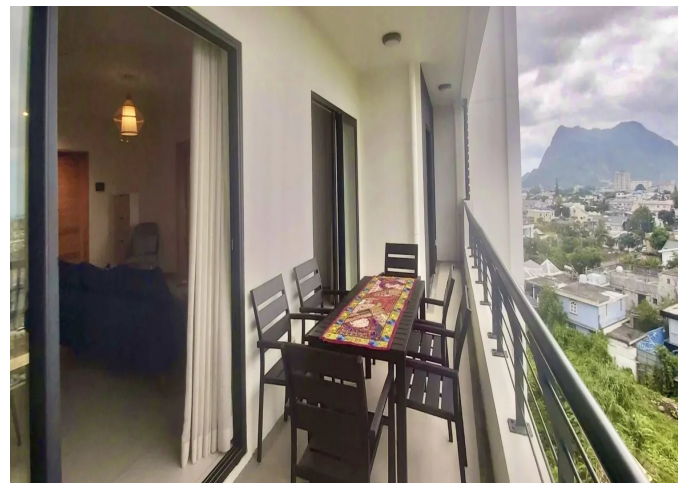


PHONE : +230 460 8213
mauritius@barnes-international.com

Ruisseau Créole, BG 09 MU
Rivière Noire, 90625

Les Allées d'Helvétia
Moka, 80840 Maurice

London Way, Coastal Road
Mahebourg , 50815 Maurice



B45 Royal Road
Grand Baie 30501



PHONE : +230 460 8213
mauritius@barnes-international.com

Ruisseau Créole, BG 09 MU
Rivière Noire, 90625

Les Allées d'Helvétia
Moka, 80840 Maurice

London Way, Coastal Road
Mahebourg , 50815 Maurice