



MOKA - OFF-PLAN - Showroom - 28.6 m<sup>2</sup>

---



SELLING PRICE : €97,711

---

EMAIL : MAURITIUS@BARNES-INTERNATIONAL.COM

---

B45 Royal Road  
Grand Baie 30501



PHONE : +230 263 3069  
mauritius@barnes-international.com

Ruisseau Créole, BG 09 MU  
Rivière Noire, 90625

Les Allées d'Helvétia  
Moka, 80840 Maurice

London Way, Coastal Road  
Mahebourg , 50815 Maurice

## DESCRIPTION

Several showrooms are available, ranging from 28.6 m<sup>2</sup> to 76 m<sup>2</sup>.

Situated in the heart of Moka Smart City, this showroom enjoys a prime strategic location. Nestled in a modern and vibrant environment, it offers direct access to major road networks, making travel to key destinations such as Ebene, Curepipe, and the northern part of the island effortless. Its central location in Bagatelle not only ensures optimal visibility but also provides easy connectivity for business. Surrounded by high-quality amenities and contemporary workspaces, this office represents an ideal opportunity for companies looking to establish themselves in a thriving business hub.

Delivery expected by the end of 2025.

# FEATURES

Type de bien:	Offices	Surface:	28.6 m <sup>2</sup>	Terrain:	-
Charges:	-	Périodicité des charges:	-	Ascenseur:	Yes
Piscine:	-	Nombre de lots:	-	Taxe foncière:	-
Parking:	-	Compléments de loyer:	-	NB de pièces:	1 room
NB de chambres:	-	Honoraire à la charge:	-		

---

B45 Royal Road  
Grand Baie 30501

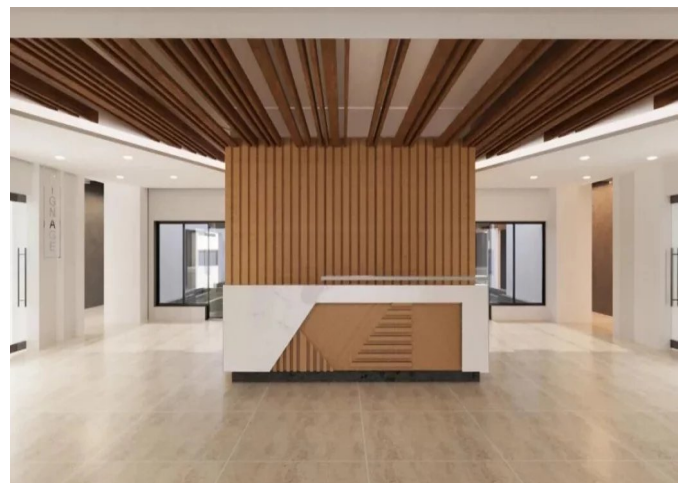


PHONE : +230 263 3069  
mauritius@barnes-international.com

Ruisseau Créole, BG 09 MU  
Rivière Noire, 90625

Les Allées d'Helvétia  
Moka, 80840 Maurice

London Way, Coastal Road  
Mahebourg , 50815 Maurice



B45 Royal Road  
Grand Baie 30501



PHONE : +230 263 3069  
mauritus@barnes-international.com

Ruisseau Créole, BG 09 MU  
Rivière Noire, 90625

Les Allées d'Helvétia  
Moka, 80840 Maurice

London Way, Coastal Road  
Mahebourg , 50815 Maurice